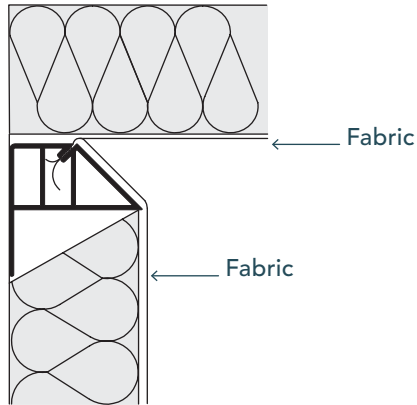


20  
BVTD

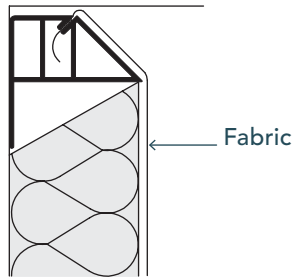
**FABRICWALL**

Stretch Fabric Systems  
Employee Owned

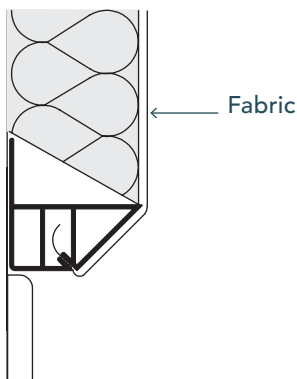
INSIDE  
CORNER



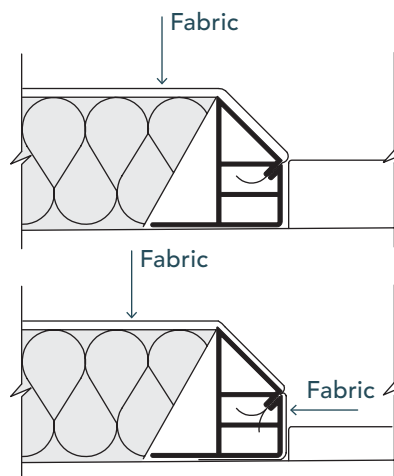
CEILING



BASE BOARD



DOOR JAMB



## DETAILS

DEPTH: 2"

**LOAD:** Top Load.  
The fabric is tucked into the track from the top down.

**USAGE:** Perimeter track. Use at windows, doors, floors, corners and ceilings.

**EDGE:** Beveled

**EDGE WRAPPING:** Only required when the edge is exposed.

*Note: When using thick fabrics hold track off the opposing wall or ceiling the thickness of the fabric to allow tucking.*