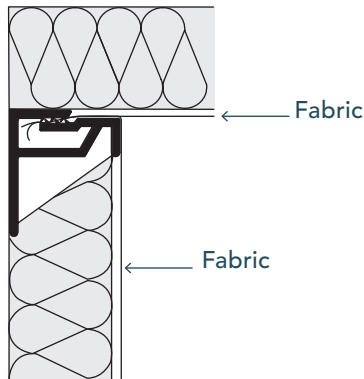


10 MOLT

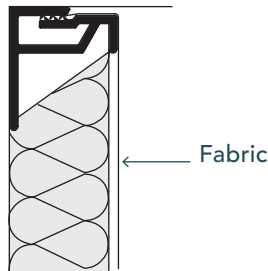


Stretch Fabric Systems
Employee Owned

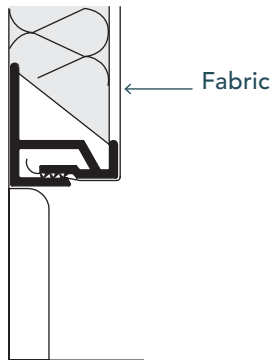
INSIDE CORNER



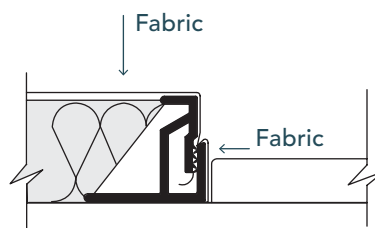
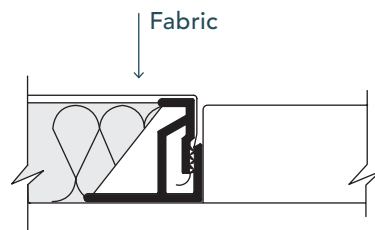
CEILING



BASE BOARD



DOOR JAMB



DETAILS

DEPTH: 1"

LOAD: Top Load.
The fabric is tucked into the track from the top down.

USAGE: Perimeter track with a Low Tucking point. Use at floors, corners and ceilings. The tucking point is recessed to reduce the need for edge wrapping.

EDGE: Square

EDGE WRAPPING: Only required when the edge is exposed.

Note: When using thick fabrics hold track off the opposing wall or ceiling the thickness of the fabric to allow tucking.