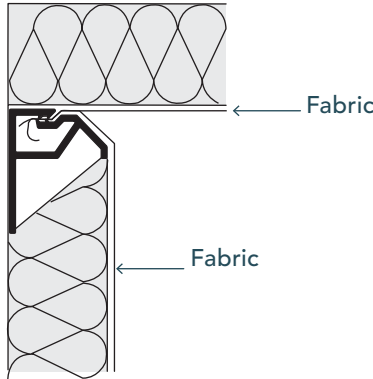


10
BVTD

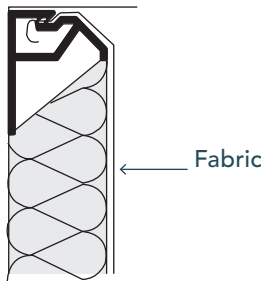
FABRICWALL

Stretch Fabric Systems
Employee Owned

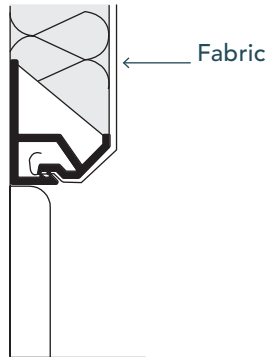
INSIDE
CORNER



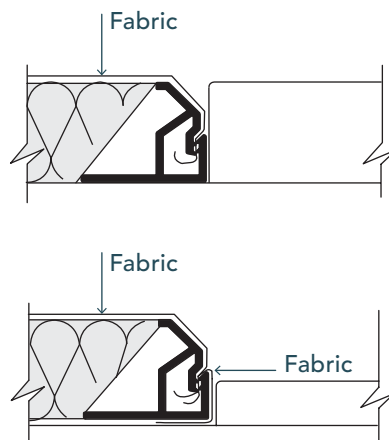
CEILING



BASE BOARD



DOOR JAMB



DETAILS

DEPTH: 1"

LOAD: Top Load.
The fabric is tucked into the track from the top down.

USAGE: Perimeter track. Use at windows, doors, floors, corners and ceilings.

EDGE: Beveled

EDGE WRAPPING: Only required when the edge is exposed.

Note: When using thick fabrics hold track off the opposing wall or ceiling the thickness of the fabric to allow tucking.