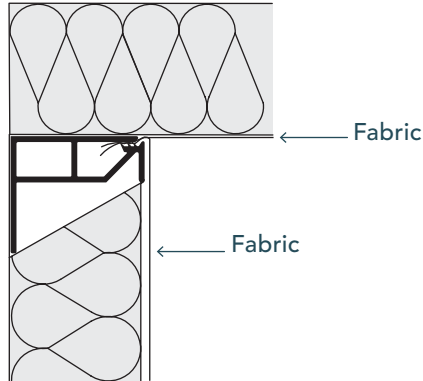


20 MOTD-R

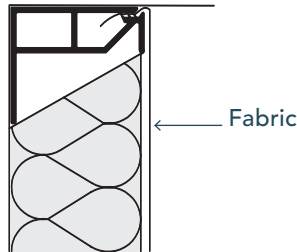


Stretch Fabric Systems
Employee Owned

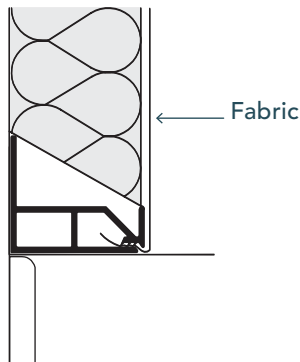
INSIDE CORNER



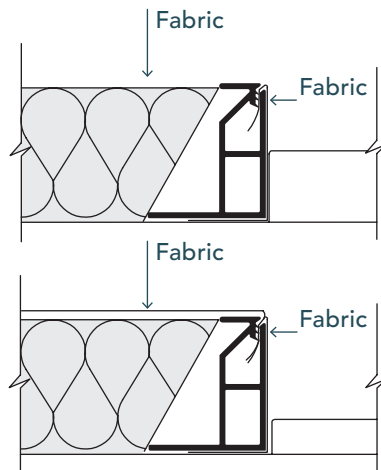
CEILING



BASE BOARD



DOOR JAMB



DETAILS

DEPTH: 2"

LOAD: Top Load.
The fabric is tucked
into the track from
the top down.

USAGE: Perimeter
track. Use at
windows, doors,
floors, corners and
ceilings.

EDGE: Square

EDGE WRAPPING:
Only required
when the edge is
exposed.

*Note: When using
thick fabrics hold
track off the
opposing wall
or ceiling the
thickness of the
fabric to allow
tucking.*