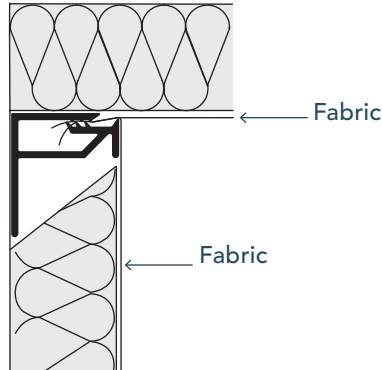


# 10 MOTD-R

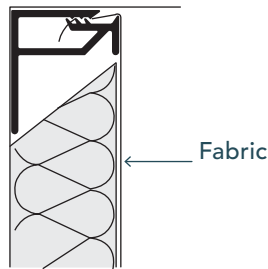


Stretch Fabric Systems  
Employee Owned

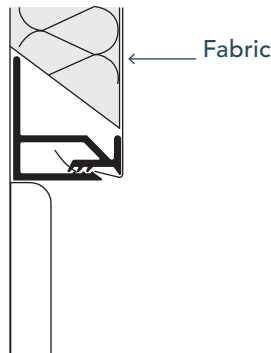
## INSIDE CORNER



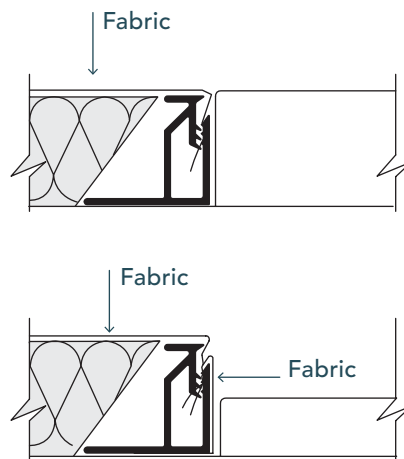
## CEILING



## BASE BOARD



## DOOR JAMB



## DETAILS

DEPTH: 1"

**LOAD:** Top Load.  
The fabric is tucked into the track from the top down.

**USAGE:** Perimeter track. Use at windows, doors, floors, corners and ceilings.

**EDGE:** Square

**EDGE WRAPPING:** Only required when the edge is exposed.

*Note: When using thick fabrics hold track off the opposing wall or ceiling the thickness of the fabric to allow tucking.*