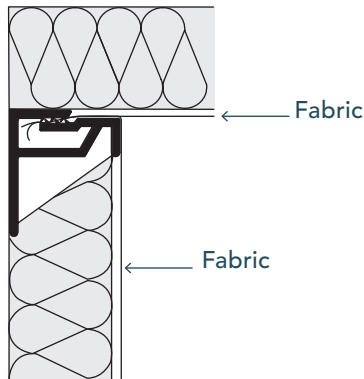
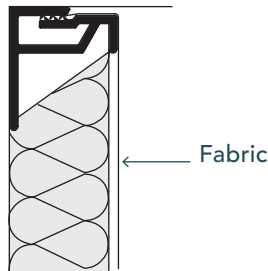


# 10 MOLT

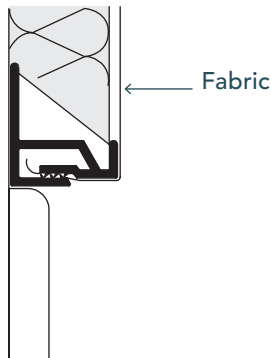
## INSIDE CORNER



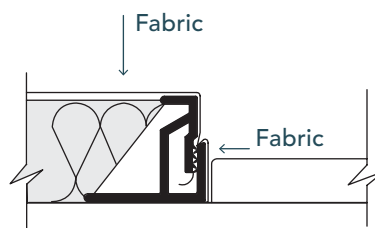
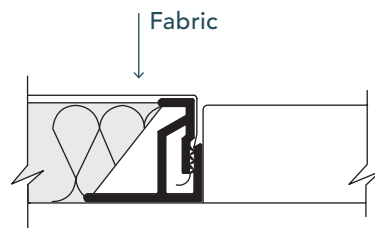
## CEILING



## BASE BOARD



## DOOR JAMB



## DETAILS

DEPTH: 1"

**LOAD:** Top Load.  
The fabric is tucked into the track from the top down.

**USAGE:** Perimeter track with a Low Tucking point. Use at floors, corners and ceilings. The tucking point is recessed to reduce the need for edge wrapping.

**EDGE:** Square

**EDGE WRAPPING:** Only required when the edge is exposed.

*Note: When using thick fabrics hold track off the opposing wall or ceiling the thickness of the fabric to allow tucking.*