



 **FABRICWALL**
Stretch Fabric Systems



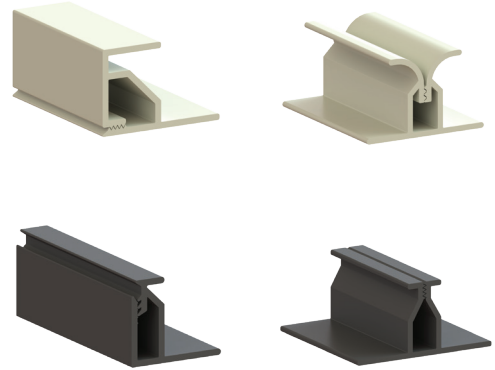
FABRICWALL

Since 2006, FabricWalls' site-built, stretch fabric system has been installed world-wide with a broad variety of fabrics. Installed on walls or ceilings, FabricWalls' sound absorbing cores enhance interior acoustics, while creating beautiful, fabric covered surfaces.



TRACK

FabricWall track is the framework that holds fabric tight and in place across walls and ceilings. Edge details, thickness and appearance of the system are determined by the track selected. There is a track profile for every jobsite condition. The track profiles are available in four thicknesses: 1/2", 5/8", 1" and 2". Standard track is white and black track is available.



CORE

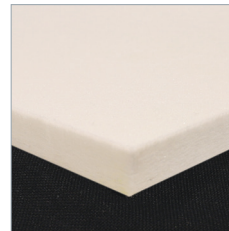
Core is the sound absorbing material installed beneath the fabric and inside the FabricWall track. There are several different types of cores:

FWPOLY Polyester
1", NRC = .75
2", NRC = .95

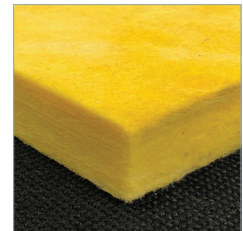
FWATF Tackable Fiberglass
1", NRC = .80
2", NRC = 1.00

FWAP Fiberglass
1", NRC = .80
2", NRC = 1.05

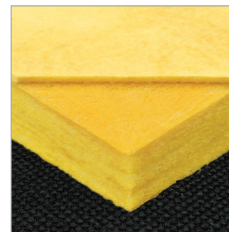
FWTW Tackable Micore
1/2", 5/8"



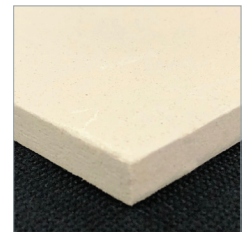
FWPOLY - Polyester



FWAP - Fiberglass



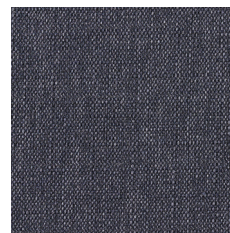
FWATF - Tackable Fiberglass



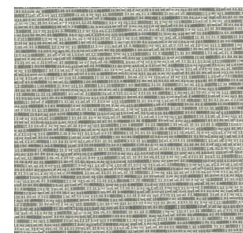
FWTW - Micore

FABRIC

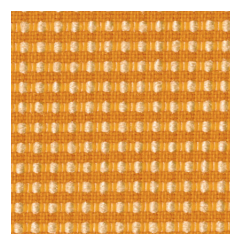
Fabric selection is crucial. Fabrics must fit in the track and hold in place without sagging or distorting. All of the fabrics offered by FabricWall are tested in the system. In addition, any other fabric supplied with the track will be tested and guaranteed to perform correctly. Custom printing and 126" wide fabrics are available.



Standard



Upgrade



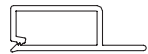



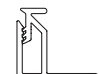



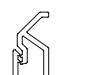

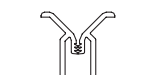


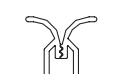
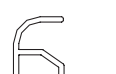

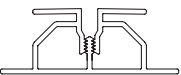
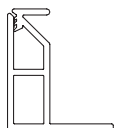
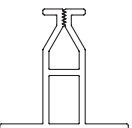
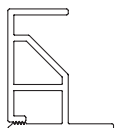
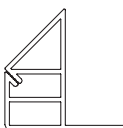
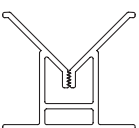


Premium



VistaSpan
126" Wide

TRACKS

1/2"	 50MOTD	 50MOCL	 50MOBL	 50COBL
5/8"	 65MOTD	 65MOCL		
1"	 10MOTD	 10MOCL	 10MOBL	 10MOLT
	 10BVTD	 10BVBL	 10BVCL	 10MOSL
	 10COTD	 10COCL	 10COBL	 10MOOC
	 10MORT.25			
2"	 20MOTD	 20MOCL	 20MOBL	 20BVTD
			 20BVCL	

TOOLS

Tucking the fabric into the track requires special tools. FabricWall offers tools made from lightweight co-polymer and tensiled steel. These are rugged tools designed to use all day for many years.

Standard Three-Piece Tool Set

