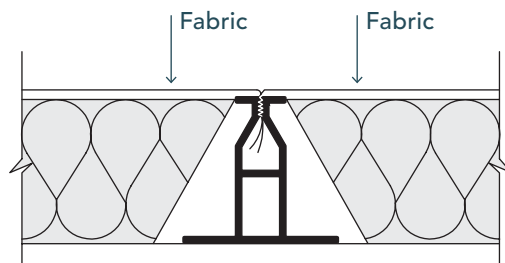


20  
MOCL



## DETAILS

**DEPTH:** 2"

**LOAD:** Top Load.  
The fabric is tucked into the track from the top down.

**USAGE:** Mid-Wall track. Use when two separate pieces of fabric are tucked to create a mid-wall joint. Creates a monolithic look to the fabric on the wall or ceiling.

**EDGE:** Square

**EDGE WRAPPING:**  
Not Required.