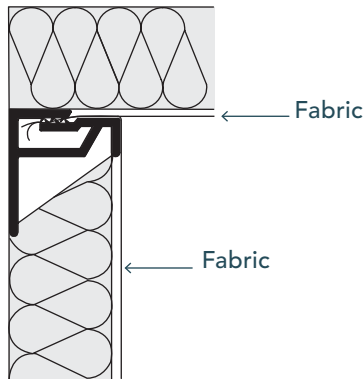
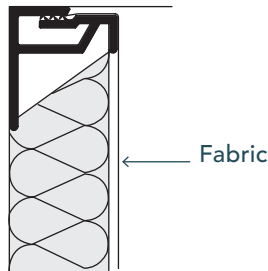


10 MOLT

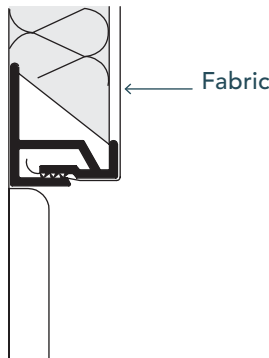
INSIDE CORNER



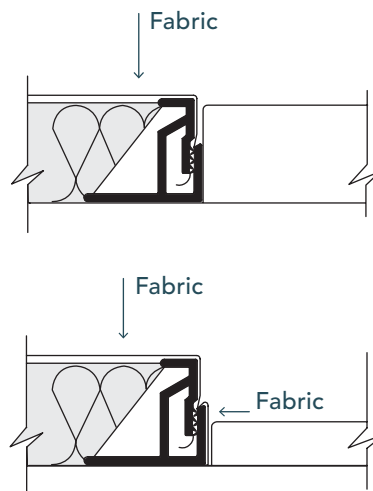
CEILING



BASE BOARD



DOOR JAMB



DETAILS

DEPTH: 1"

LOAD: Top Load.
The fabric is tucked into the track from the top down.

USAGE: Perimeter track with a Low Tucking point. Use at windows, doors, floors, corners and ceilings. The tucking point is recessed to reduce the need for edge wrapping.

EDGE: Square

EDGE WRAPPING:
Only required when the edge is exposed.