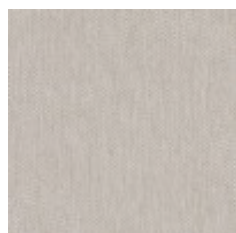
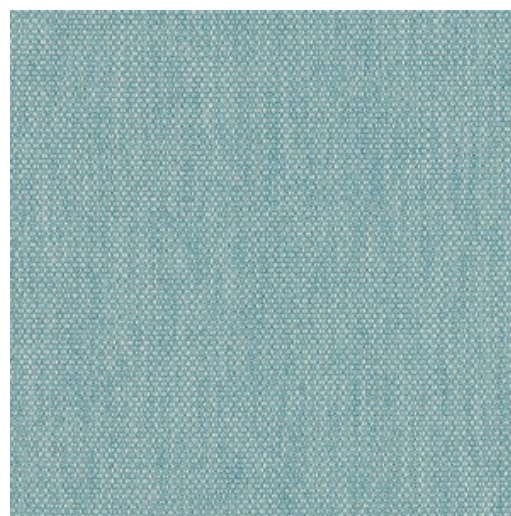
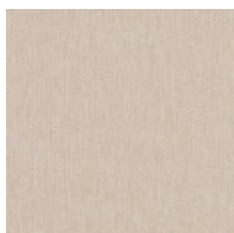


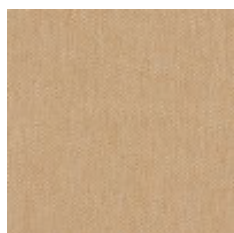
| | |
|-----------------------|--|
| Designer | West Elm |
| Use | Upholstery, Panel Fabrics |
| Content | 18% Polyester, 82% Polyester (Postconsumer Recycled) |
| Finish | Stain Repellent |
| Cleaning | Water-based/Solvent (WS) |
| Weight | 13.3 ounces/linear yard |
| Width | 54 inches (137 cm) |
| Shown Railroaded | No |
| Flammability | ASTM E 84 Unadhered Class A, CA TB 117-2013 |
| Abrasion | 100,000 Wyzenbeek double rubs (CD) |
| Lightfastness | 40 hours |
| ACT | |
| LEED | Recycled Content |
| Sustainable Logistics | Ships Carbon Neutral |
| Warranty | 5 years |
| Origin | United States |



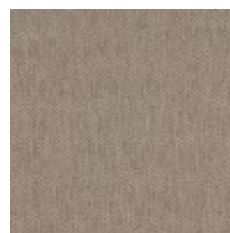
Light Mocha
4142-101



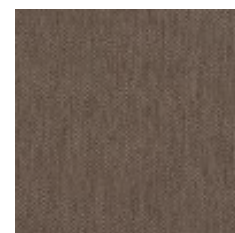
Belgian Flax
4142-102



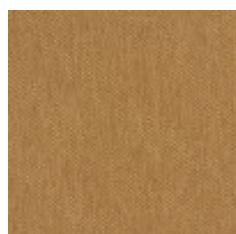
Camel
4142-103



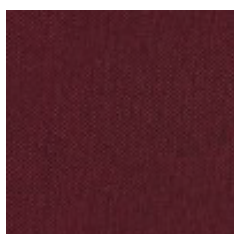
Mocha
4142-104



Twilight
4142-105



Antique Brass
4142-201



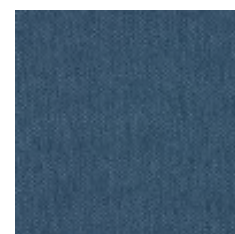
Berry
4142-301



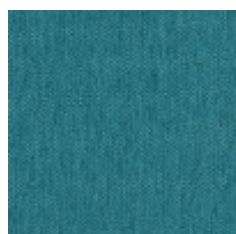
Smoke Blue
4142-401



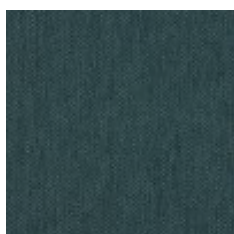
Carolina
4142-402



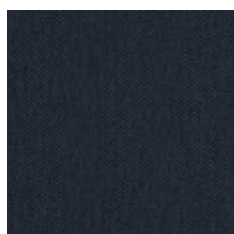
Ink Blue
4142-403



Blue Coral
4142-404



Regal Blue
4142-405



Black Indigo
4142-406



Yellow Moss
4142-501



Green Sprout
4142-502



Stretch Systems for Walls & Ceilings

www.fabric-wall.com



Fern Green
4142-503



Papaya
4142-701



Cayenne
4142-702



Frost
4142-801



Platinum
4142-802



Slate
4142-803