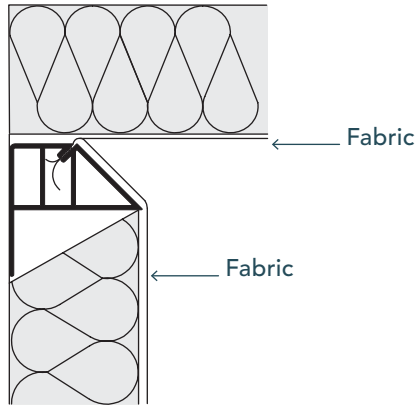
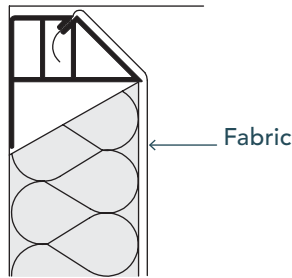


20  
BVTD

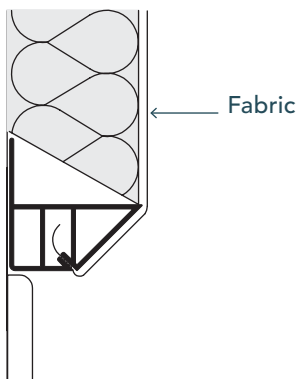
**INSIDE  
CORNER**



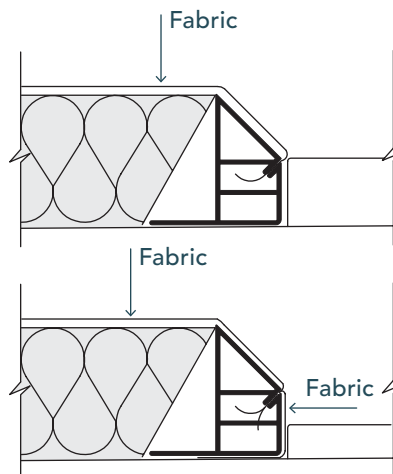
**CEILING**



**BASE BOARD**



**DOOR JAMB**



**DETAILS**

DEPTH: 2"

LOAD: Top Load.  
The fabric is  
tucked into the  
track from the top  
down.

USAGE: Perimeter  
track. Use at  
windows, doors,  
floors, corners and  
ceilings.

EDGE: Beveled

EDGE WRAPPING:  
Only required  
when the edge is  
exposed.