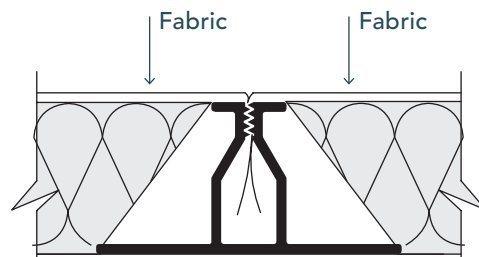


10
MOCL-BLK

 **FABRICWALL**

Stretch Systems for Walls & Ceilings



DETAILS

DEPTH: 1"

LOAD: Top Load.
The fabric is tucked into the track from the top down.

USAGE: Mid-Wall track. Use when two separate pieces of fabric are tucked to create a mid-wall joint. Creates a monolithic look to the fabric on the wall or ceiling.

EDGE: Square

EDGE WRAPPING:
Not Required.